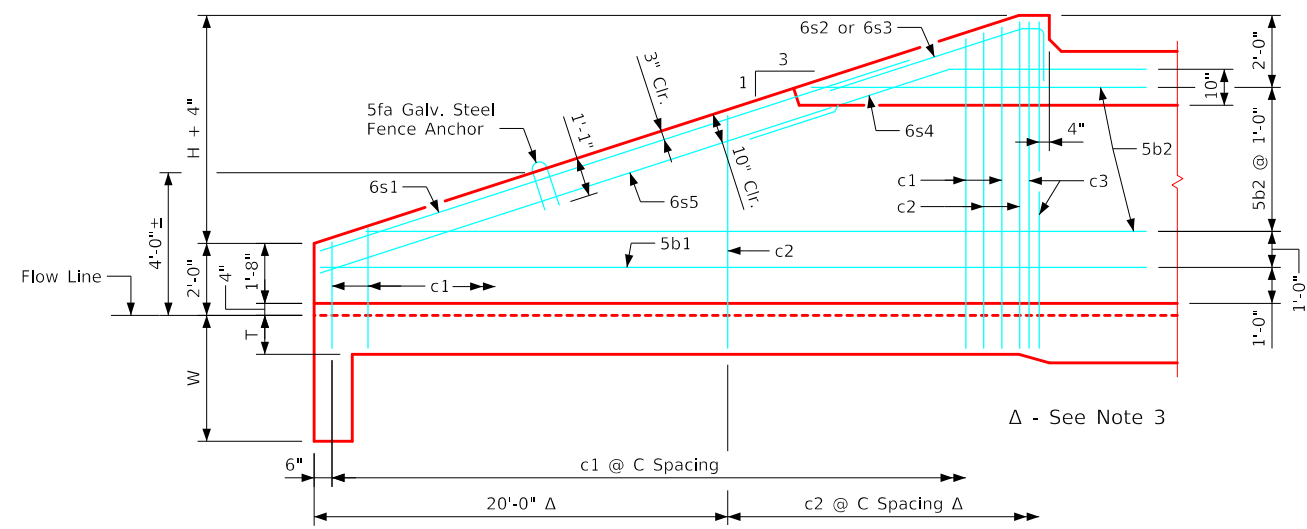
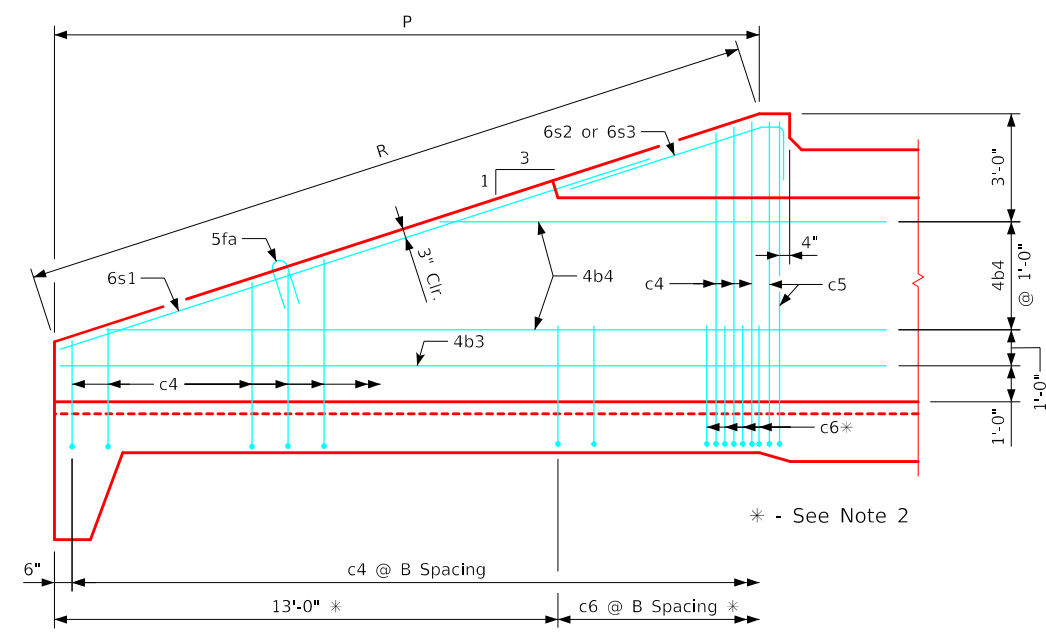


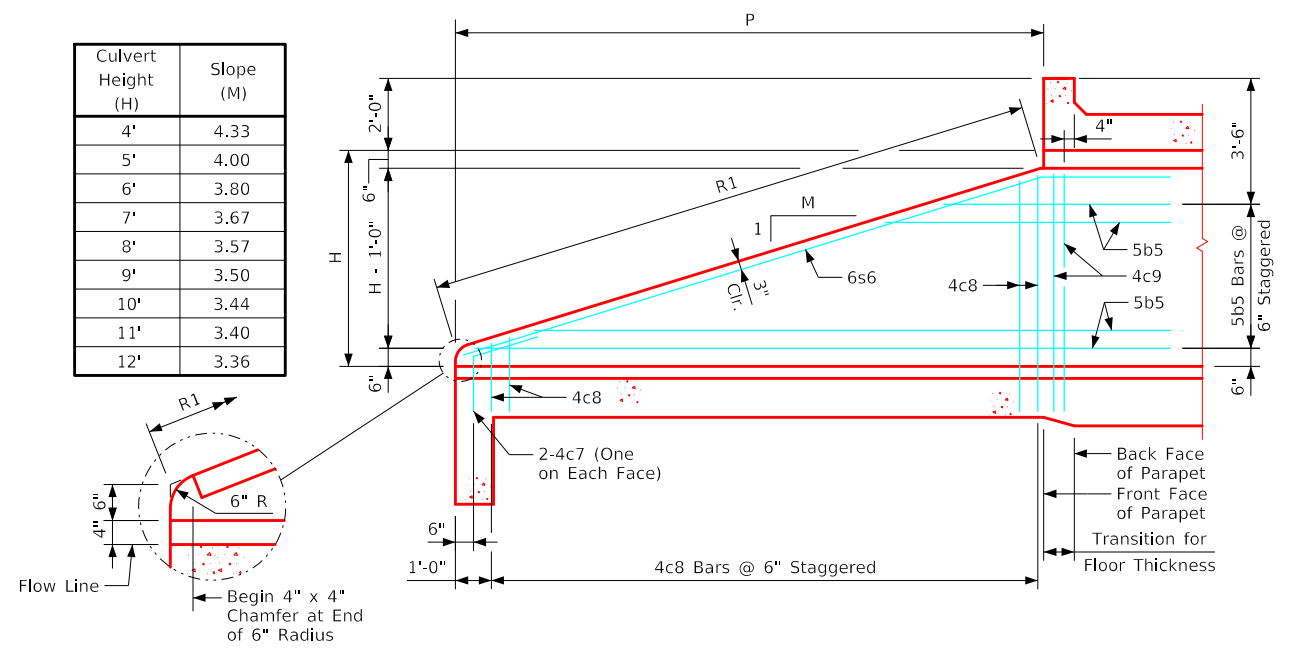
ENGLISHLRFDSTWNCULVERTS.DGN - TWPWH 0-3-20 - THIS SHEET ISSUED 07-2020.



Typical View - Front Face Wingwall Reinforcing





Typical View - Back Face Wingwall Reinforcing



Typical View - Interior Wall

Notes:

1. Bar spacings and positions shown are similar for all sizes of headwalls in this standard.
2. Not applicable for 4' thru 5' height headwalls.
3. Not applicable for 4' thru 8' height headwalls.
4. For headwall dimensions and bar spacing see Sheet TWPWH 0-1-20.
5. Apron m3 bars are to be centered on \mathcal{C} culvert.
6. B.F.V. (c5) and F.F.V. (c3) and interior wall both F.V. (c9) bars are approximately 4" from the back of parapet for all headwalls.

LATEST REVISION DATE		Standard Design - Twin Reinforced Concrete Box Culverts	
		Parallel Wing Headwalls	
		July, 2020	
 APPROVED BY BRIDGE ENGINEER	Wingwall Elevations 0° Skew		TWPWH 0-3-20